

Part of the Biostat water management system.

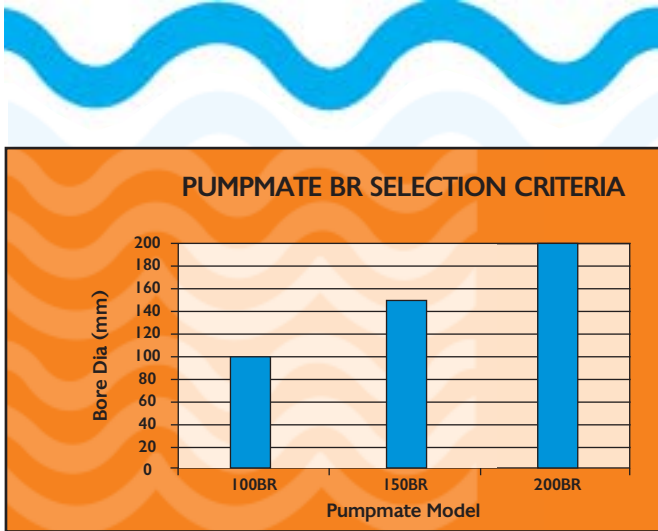


Chart provides approximate guidelines only. Contact your nearest dealer for the correct size equipment.

PUMPMATE combats problems caused by iron & sulphur bacteria:

- Pump fouling
- Red water
- Blocked pipes
- Corrosion
- Bore hole fouling
- Rotten egg smell
- Dripper blockages



ABN: 54 255 837 914

69 Oats Street
Carlisle WA 6101

PO Box 429 Cloverdale WA 6985

Telephone: 08 9472 6466
Facsimile: 08 9472 6455
Toll Free: 1800 442 223

Email: sales@pumpmate.com.au
Website: www.pumpmate.com.au

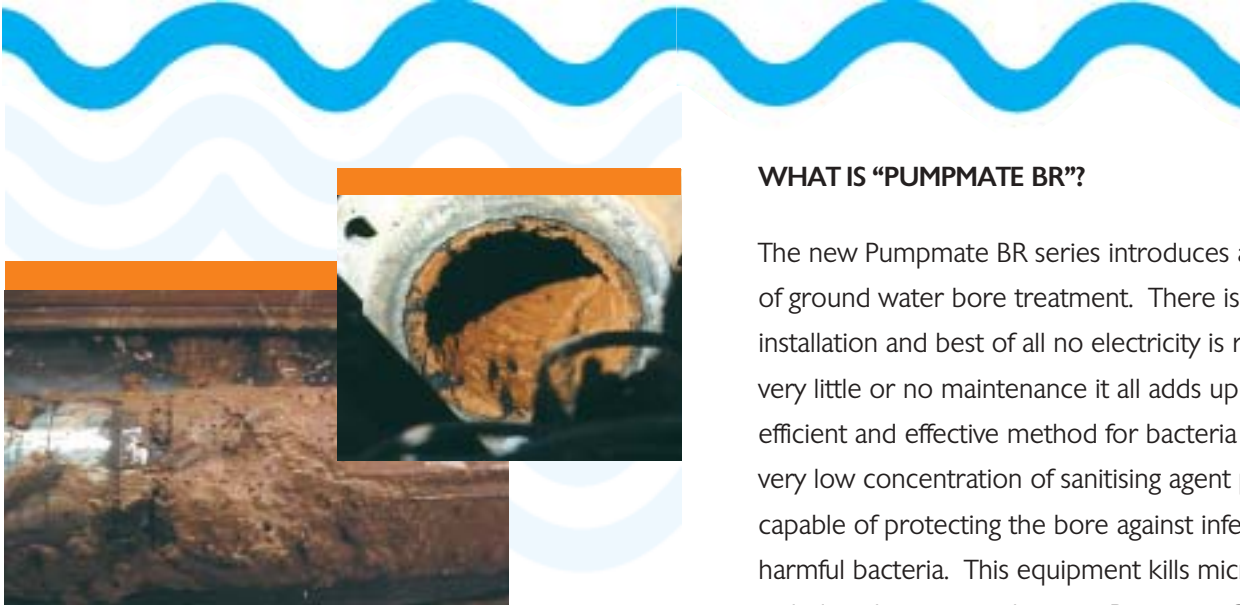
Contact your local distributor...

Biostat Engineering

Pumpmate BR

Guaranteed to extend
submersible pump life and bore
hole yield where iron and
sulphate bacteria problems exist

Horticulture - Agriculture - Domestic



Iron bacteria slime blocks pump inlet

WHAT IS BACTERIAL FOULING OF PUMPS AND SYSTEMS?

Iron Bacteria causes rusty slime to form on bore screens and in submersed pumps. It reduces the inflow of water to the bore by blocking the screen and the efficiency of the pump by progressively blocking the impellers. The slime also coats the submersible motor which overheats as a result. In many cases the pump blocks completely and the electric motor fails.

Most of the rusty slime seen inside the discharge and distribution pipes has been deposited there during pumping. Nearly all of the rusty slime is produced in the ground water bore. The problems of iron and sulphur bacteria in water bores are serious worldwide. Agricultural and horticultural irrigators in all Australian States have serious problems with bacterial infection of water bores.

WHAT IS "PUMPMATE BR"?

The new Pumpmate BR series introduces a new generation of ground water bore treatment. There is no costly installation and best of all no electricity is required. With very little or no maintenance it all adds up to a cost efficient and effective method for bacteria control. The very low concentration of sanitising agent produced is capable of protecting the bore against infestation by harmful bacteria. This equipment kills micro-organisms, including the nasty pathogenic Protozoa, Giardia Lamblia & Cryptosporidium. Potable water is not comprised by any part of the treatment.



Pumpmate 100BR

Pumpmate BR models are available as: 100BR, 150BR and 200BR. There are models to suit borehole sizes up to 200mm*. The treatment solution is deposited automatically each time the bore hole pump is turned off. This is sufficient to control the iron bacteria within the borehole and prevent red slime accumulation on equipment.

*Consult your local dealer for correct equipment.

Pumpmate BR Features

- Prevents iron deposits caused by iron bacteria in water bores and wells.
- Industrial quality equipment.
- Non electrical connections..
- Easily installed.
- Simple operation.
- Fully automatic.
- Low maintenance.
- Weather resistant.
- Australian made.
- 12 months warranty..

Guaranteed to extend submersible pump life and bore hole yield

