

Part of the Biostat water management system.

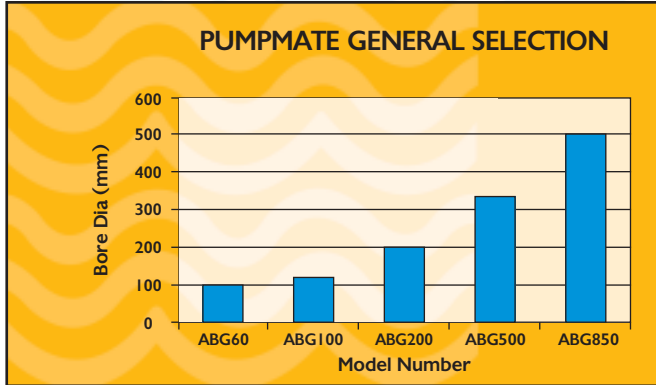


Chart provides approximate guidelines only. Contact your nearest dealer for the correct size equipment.

PUMPMATE combats problems caused by iron & sulphate bacteria:

- Pump fouling.
- Red water.
- Blocked pipes.
- Corrosion.
- Bore hole fouling.
- Rotten egg smell.
- Dripper blockages.



ABN: 54 255 837 914

69 Oats Street
Carlisle WA 6101

PO Box 429 Cloverdale WA 6985

Telephone: 08 9472 6466
Facsimile: 08 9472 6455
Toll Free: 1800 442 223

Email: sales@pumpmate.com.au
Website: www.pumpmate.com.au

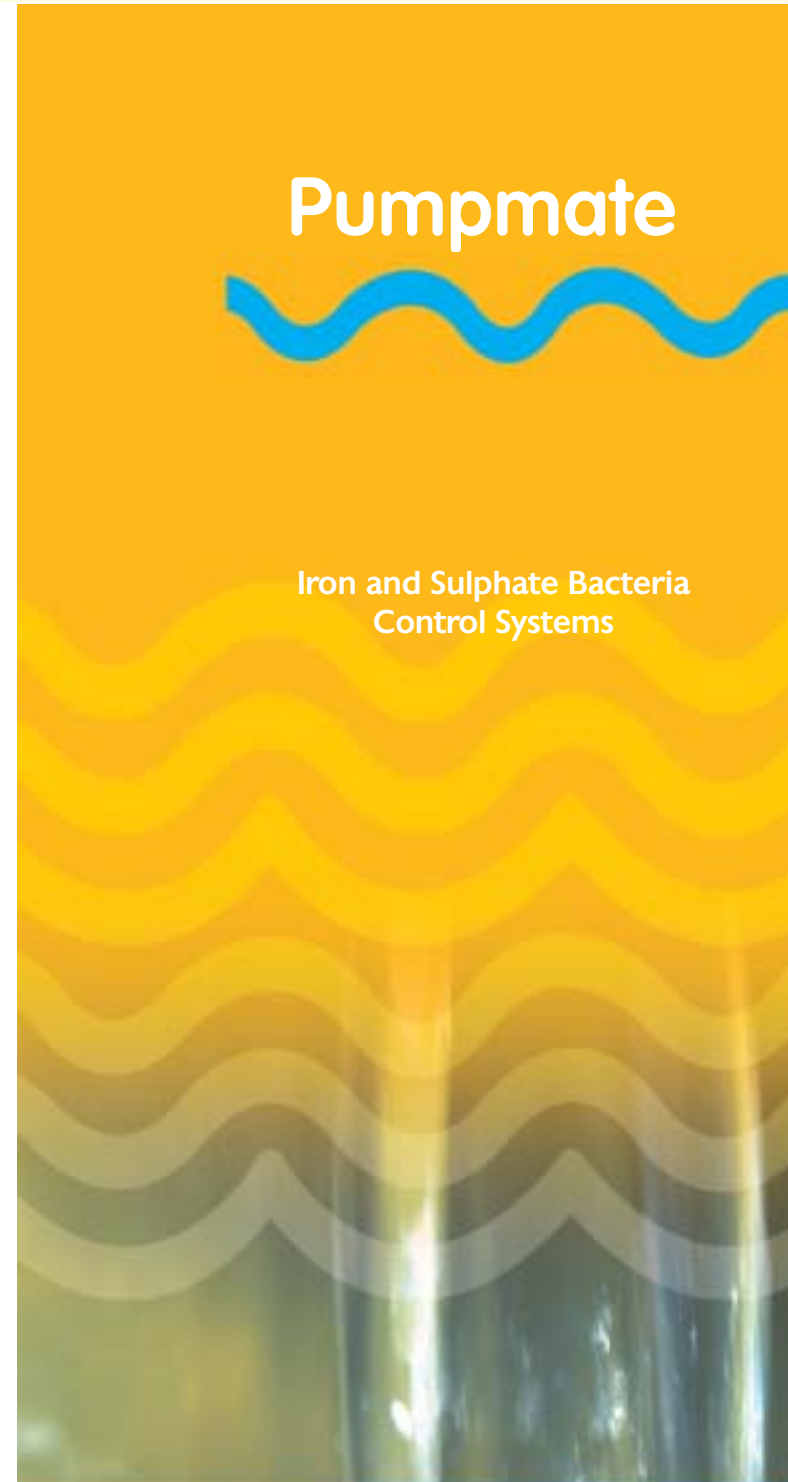
Biostat Engineering

Contact your local distributor...

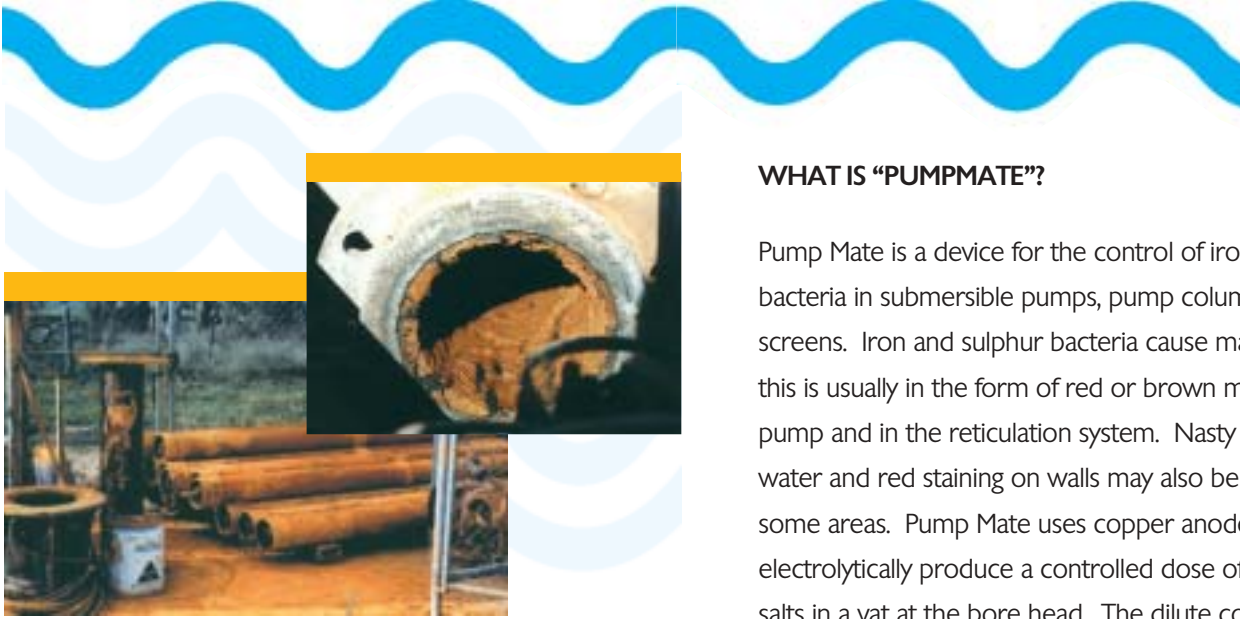
Pumpmate



Iron and Sulphate Bacteria Control Systems



Industrial - Mining - Agricultural - Domestic



Iron bacteria fouling causes pump failure in this system every 3 months

WHAT IS BACTERIAL FOULING OF PUMPS AND SYSTEMS ?

Iron Bacteria causes rusty slime to form on bore screens and in submersed pumps. It reduces the inflow of water to the bore by blocking the impellers. The slime also coats the submersible motor which overheats as a result. In many cases the pump blocks completely and the electric motor fails.

Most of the rusty slime seen inside the discharge and distribution pipes has been deposited there during pumping. The largest percentage of the rusty slime is produced in the ground water bore. The problems of iron and sulphur bacteria in water bores are serious worldwide.

Agricultural and horticultural irrigators in all Australian States have serious problems with bacterial infection of water bores.

WHAT IS "PUMPMATE"?

Pump Mate is a device for the control of iron and sulphur bacteria in submersible pumps, pump columns, bores and screens. Iron and sulphur bacteria cause many problems, this is usually in the form of red or brown material on the pump and in the reticulation system. Nasty smells from the water and red staining on walls may also be a problem in some areas. Pump Mate uses copper anodes to electrolytically produce a controlled dose of soluble copper salts in a vat at the bore head. The dilute copper solution which is injected into the borehole water inhibits bacterial growth and prevents fouling of the treated screen and pump. With no bacteria, there is no slime formed and the pump remains clean giving maximum efficiency and a long life.



ABG200CUB-CB Pumpmate

Pumpmate models are available as: ABG60, 100, 200 & 850. There are models to suit all size boreholes. The treatment solution is automatically injected at pump level into the bore hole every 12 hours. This is sufficient to control the iron bacteria within the borehole and prevent red slime accumulation on equipment.

Pumpmate Features:

- Prevents iron deposits caused by iron bacteria in water bores and wells.
- Industrial quality equipment.
- Microprocessor controlled.
- Easily installed.
- Simple operation.
- Fully automatic.
- Low maintenance.
- Weather resistant.
- Australian made.
- 12 months warranty.

Guaranteed to extend submersible pump life and bore hole yield

